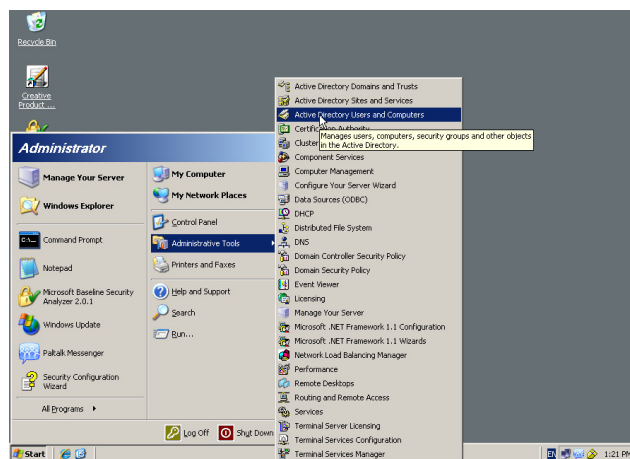


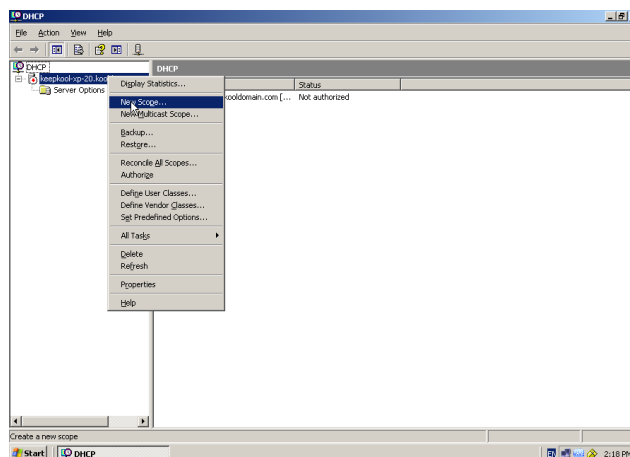
## Configuring and Activating the DHCP

The **DHCP** distributes the IP address to the client computers. This needs to be configured with forward and reverse lookup zones and then activated. To do this, follow these instructions.

- Click **Start**
- Highlight **Administrative Tools**
- Select **Active Directory Users and Computers**

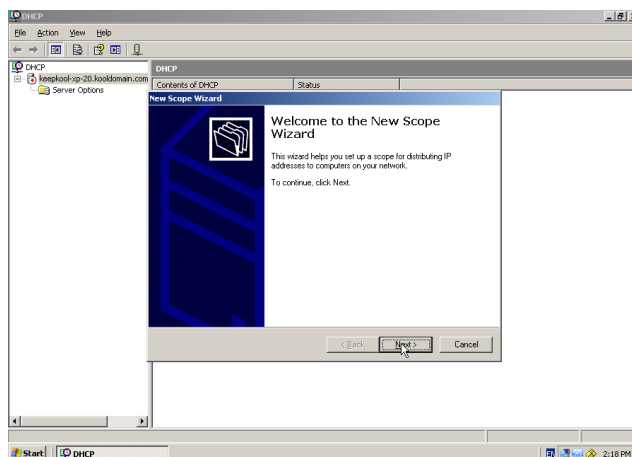


Right click the server icon with the red arrow pointing downwards  
Select **New Scope**



Click **Next**

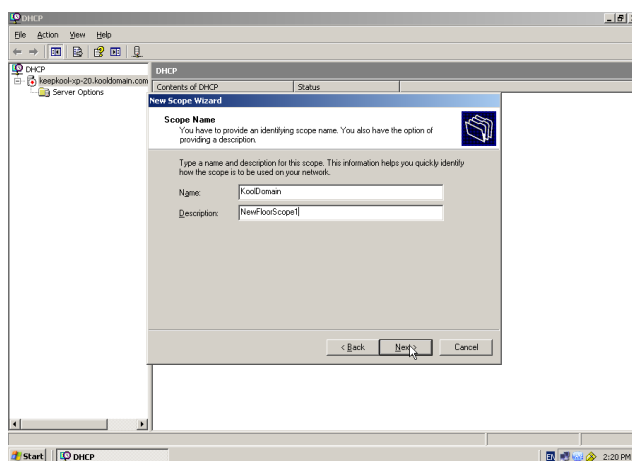
## Configuring and Activating the DHCP



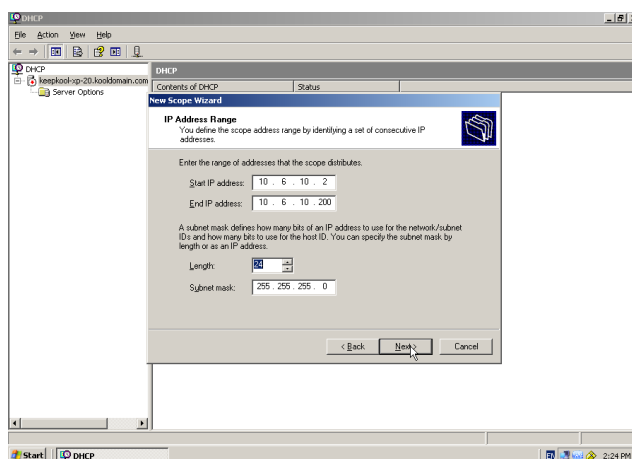
Enter the name of the scope and its description “**(Scope)**”

Then enter “**NewFloorScope1**” for the description

Click **Next**



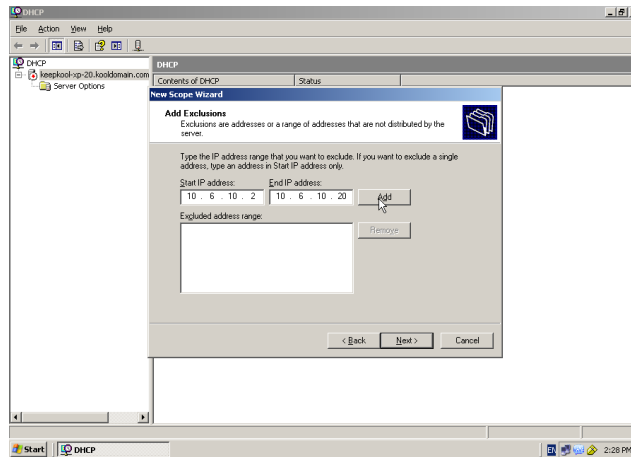
Start IP address this will be 10.6.10.2 and then end IP address will be 10.6.10.200. The length will be set at 24 to give a class c range of address making the subnet mask 255.255.255.0 as pictured below. Once this is entered click **Next**.



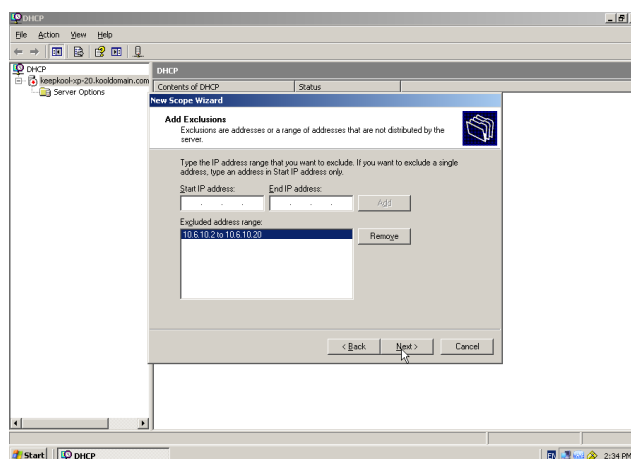
## Configuring and Activating the DHCP

Enter the exclusion range in this part. This means the fixed IP addresses that are set in the system, for example printers, wireless modems, modems, servers and alike, are not distributed to the user.

Enter the information pictured below and click **Add**.

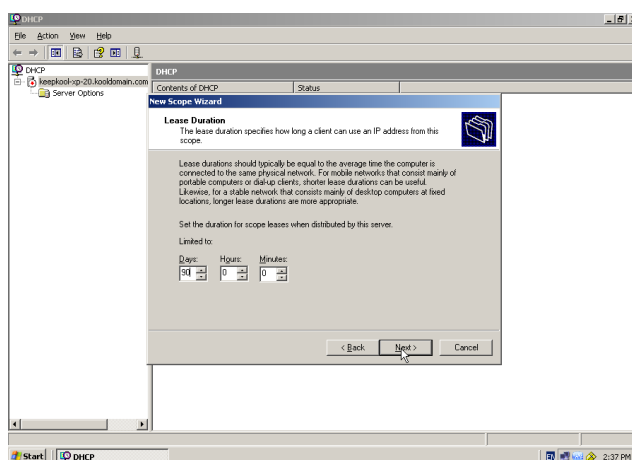


Then click **Next**.

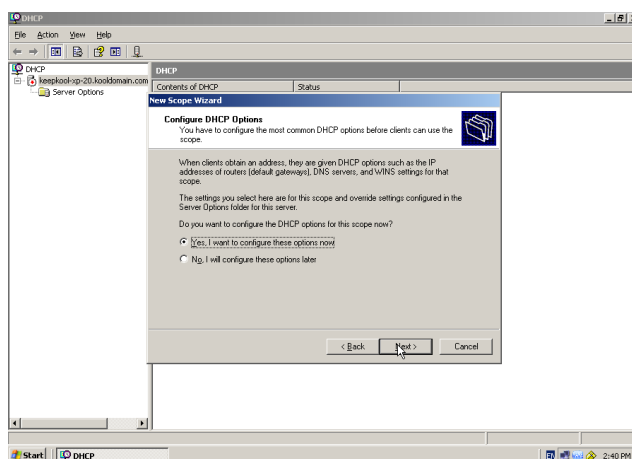


## Configuring and Activating the DHCP

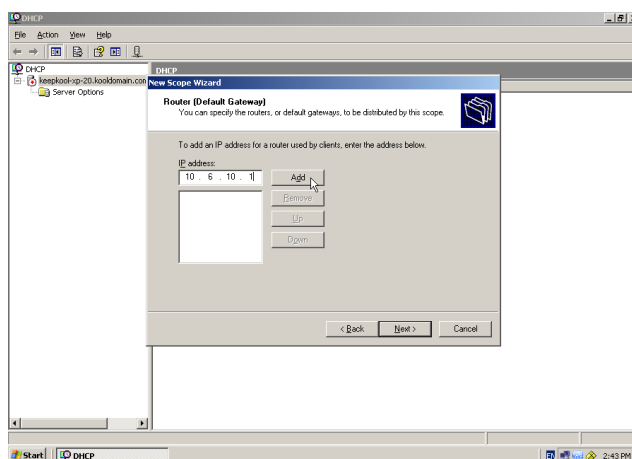
This scope is for the desktop machines only as they have a more stable connection, so a longer lease is required at 90 days. Enter this in the space provided and click **Next**.



You are now asked if you want to configure these options for the scope now or later. Select **Yes** and click **Next**.

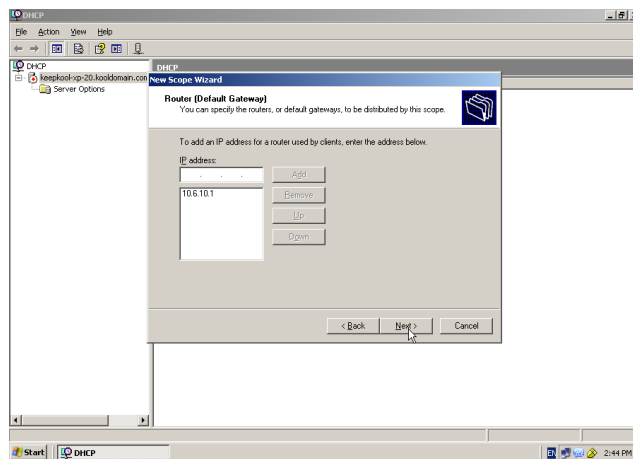


Enter the address of the default gateway, in this case it's the server's IP address of 10.6.10.1 then click **Add**.

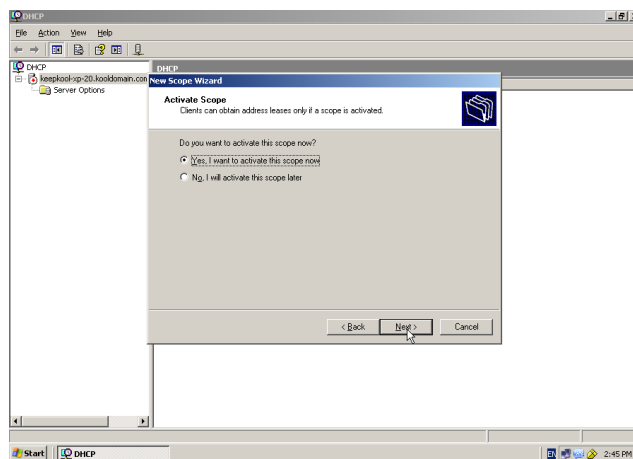


## Configuring and Activating the DHCP

Then click **Next**

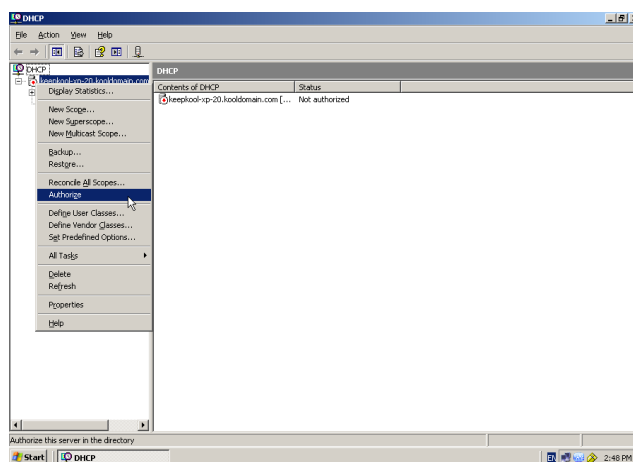


Click **Next** on the next screens till you see this one below. When you do click **Next** to activate the scope.



Then click **Finish**

Then right click the server icon and scroll down to **Authorize** and left click



## Configuring and Activating the DHCP

This will change the red arrow that's points downward on the server to point upwards and change colour to green indicating the scope is active.

